

MONTHLY MEMBERSHIP PROGRESS REPORT

LOCATION INDIA

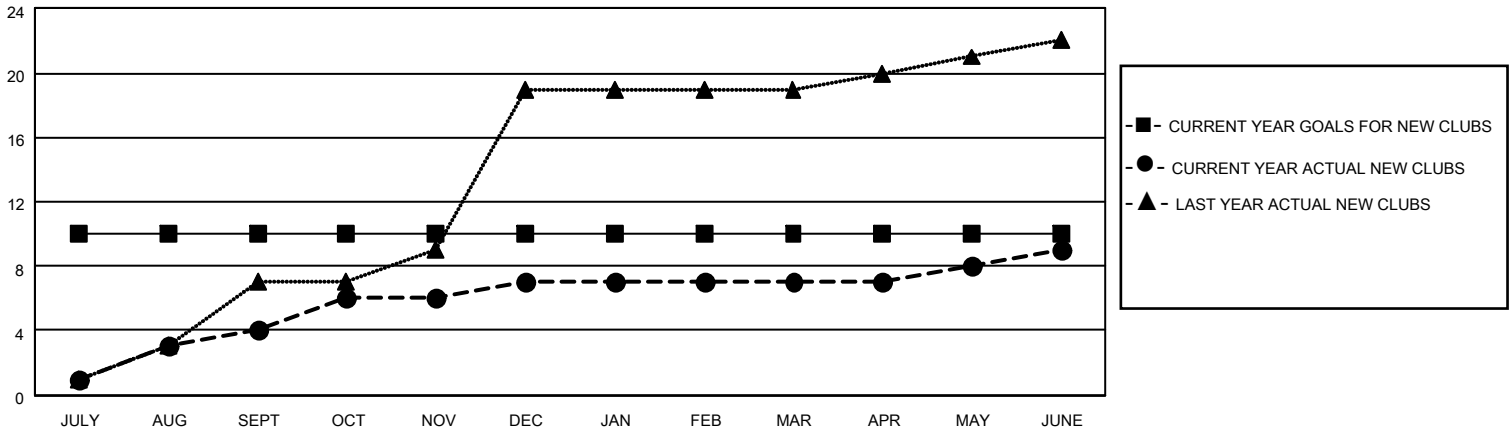
District 322C1

Results as of: 6/30/2022

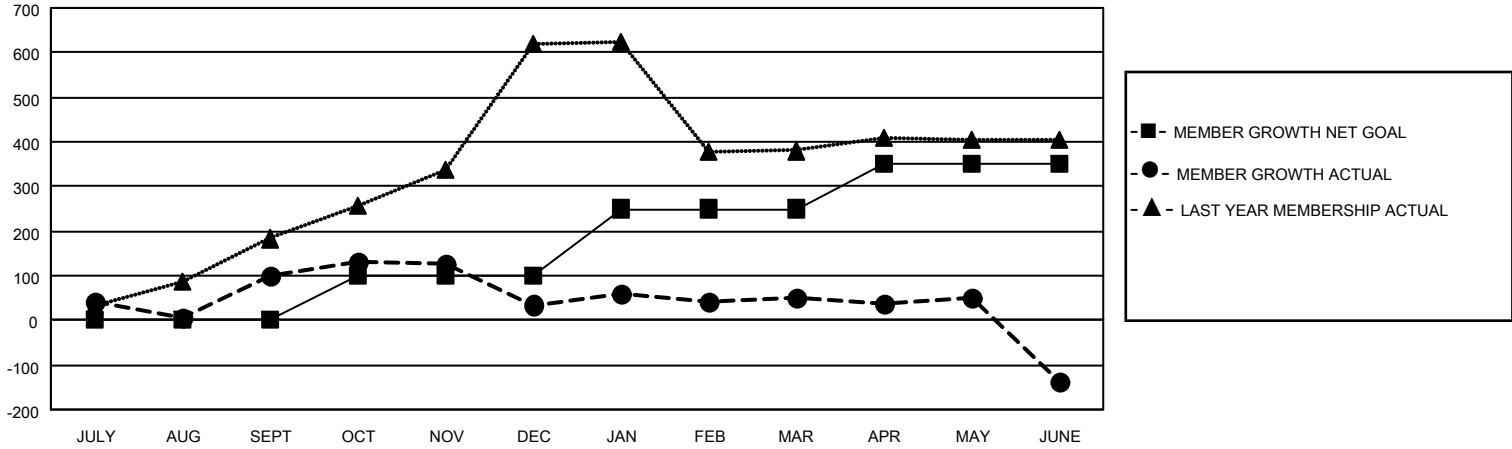
Clubs			
RESULTS FOR 2021-2022			
QUARTER	NEW CLUB GOAL	NEW CLUBS	DROPPED CLUBS
JULY/AUG/SEPT	10	4	6
OCT/NOV/DEC	0	3	3
JAN/FEB/MAR	0	0	2
APR/MAY/JUNE	0	2	7

Members			
RESULTS FOR 2021-2022			
QUARTER	MEMBER GROWTH NET GOAL	MEMBER GROWTH ACTUAL	DROPPED MEMBERS ACTUAL (including transfers)
JULY/AUG/SEPT	0	238	135
OCT/NOV/DEC	100	145	209
JAN/FEB/MAR	150	74	55
APR/MAY/JUNE	100	316	470

GOALS AND ACTUAL NEW CLUBS CUMULATIVE



GOALS AND ACTUAL MEMBERS CUMULATIVE



DROPPED CLUBS: 18

88 CLUBS OF 130 ADDED 1 OR MORE NEW MEMBERS

GENDER DISTRIBUTION

MALE	2,591 (76.82%)
FEMALE	782 (23.18%)
NON BINARY	0 (0.00%)
PREFER NOT TO ANSWER	0 (0.00%)

DROPPED MEMBERS

[CLICK HERE FOR CUMULATIVE MEMBERSHIP DATA](#)

DECEASED	17
CLUB CANCELLED	263
OTHER	589
TOTAL	869

TOTAL FAMILY UNIT MEMBERS 1,798

FAMILY MEMBERS PAYING HALF DUES 1,079